

MVS6750-LV

MV Turnkey Station for 1500 Vdc String Inverter SG250HX



SAVED INVESTMENT

- Up to 7.5 MW block design
- Easy transportation due to standard container design
- All pre-assembled for easy set-up and commissioning

EASY O&M

- Online analysis for fast trouble shooting
- Modular design, Main device easy replacement

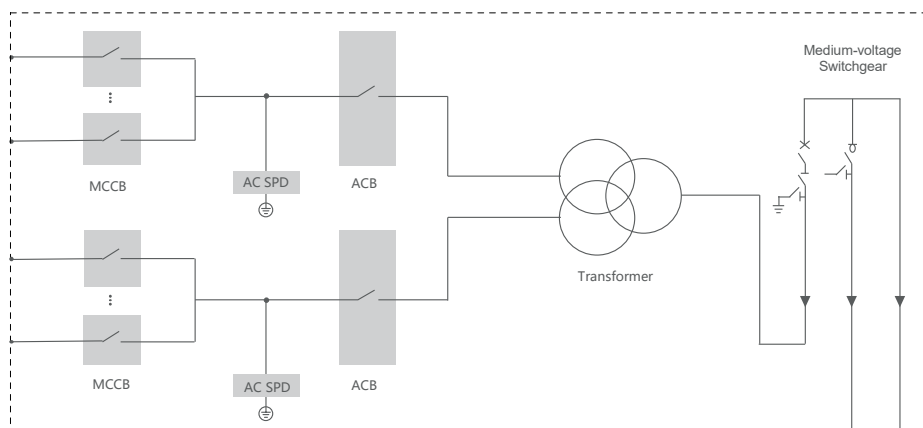
SAFETY

- MV and LV Isolated, independent control room
- All key components front accessible, no need walk-in operation

RELIABLE

- All components type-tested
- Compliance with standards: IEC 60076, IEC 62271, IEC 61439

CIRCUIT DIAGRAM



Type designation	MVS6750-LV
Transformer	
Transformer type	Oil immersed
Rated power	6750 kVA @ 40 °C
Max. power	7500 kVA @ 30 °C
Vector group	Dy11y11
LV / MV voltage	0.8 kV / 20 – 35 kV
Maximum input current at nominal voltage	2706 A * 2
Frequency	50 Hz / 60 Hz
Tapping on HV	0, ±2*2.5%
Efficiency	≥99%
Cooling type	ONAN (Oil Natural Air Natural)
Impedance	8% (±10%)
Oil type	Mineral oil (PCB free)
Winding material	Al / Al
Insulation class	A
MV Switchgear	
Insulation type	SF6
Rate voltage	24 – 36 kV
Rate current	630 A
Internal arcing fault	IAC AFL 20kA / 1s
Qty.of feeder	3 feeders
LV Panel	
ACB specification	3200 A / 800 Vac / 3P, 2 pcs
MCCB specification	250 A / 800 Vac / 3P, 30 pcs
Protection	
AC input protection	Circuit breaker
Transformer protection	Oil-temperature, Oil-level, Oil-Pressure
Relay protection	50 / 5I, 50N / 5IN
LV overvoltage protection	AC Type II (optional: AC Type I + II)
General Data	
Dimensions (W*H*D)	6058 * 2896 * 2438 mm
Approximate weight	23 T
Operating ambient temperature range	-20 to 60 °C (optional: -30 to 60 °C)
Auxiliary power supply	5 kVA / 400 V (optional: max. 40 kVA)
Degree of protection	IP54
Allowable relative humidity range (non-condensing)	0 – 95 %
Operating altitude	1000 m (standard) / > 1000 m (optional)
Communication	Standard: RS485, Ethernet, Optical fiber
Compliance	IEC 60076, IEC 62271-200, IEC 62271-202, IEC 61439-1, EN50588-1